

COMMITTEE REPORT

The **Committee on Justice Initiatives (CJI)** is the umbrella for the work of the four initiatives listed below. CJI and the initiatives, which are referred to as the **Justice Initiatives Community (CJI&I)**, oversee and guide various programs and projects to help assure high quality legal services for all Michigan citizens. This work involves over 75 volunteers, mostly members of the bench or bar, who generously provide their time and expertise. CJI&I is supported by the staff of the State Bar of Michigan's Justice Initiatives Division.

Criminal Issues Initiative

The dual purposes of this initiative are to address issues of indigent criminal defense in Michigan and to educate the legal community on civil collateral consequences.

Equal Access Initiative

This group develops projects, programs and trainings to benefit underserved populations on issues such as race and ethnicity, gender, and disability.

Justice Policy Initiative

The members examine, analyze and recommend positions on proposed legislation, court rules, and other policies relevant to the justice initiatives issues.

Pro Bono Initiative

This group encourages and coordinates free or discounted fees for civil legal services to aid low-income individuals in need of legal assistance. They also support trainings to assist in these endeavors.

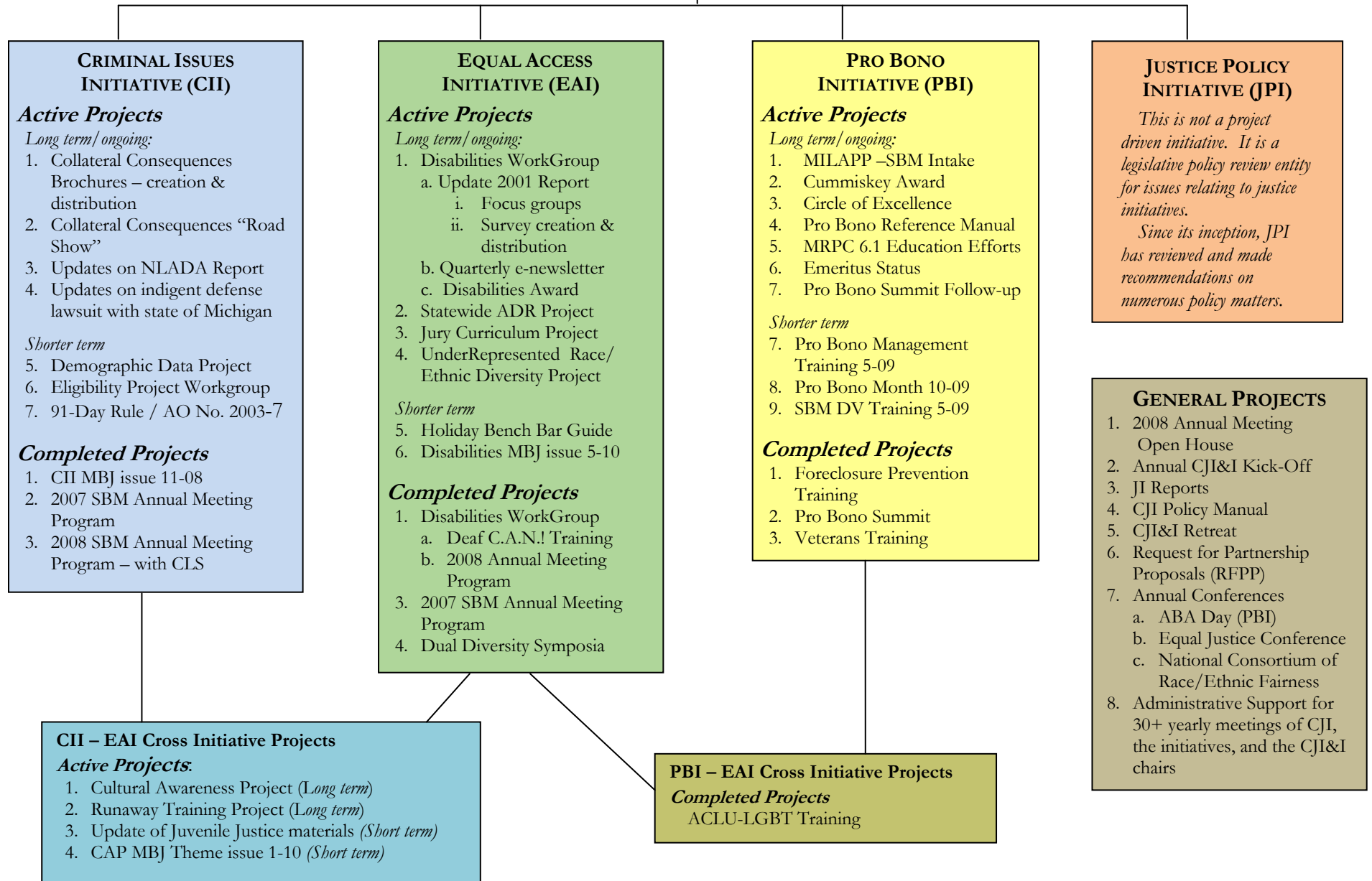
The attached diagram shows JID's organizational structure, as well as a listing of the projects, programs and trainings undertaken in the 2007-08. Some are ongoing activities while others are short term.

CJI&I encourages partnerships with State Bar committees, sections, and affinity bars, as well as many other organizations. By collaborating on resources such as personnel, knowledge, and marketing, the quality of various projects, programs and trainings is enhanced. Current partners include the Michigan Supreme Court, many courts and judicial associations, prosecutor and defense attorney entities, the Michigan State Bar Foundation, Michigan law schools, Michigan high schools, domestic violence and disabilities organizations, and statewide legal aid programs. A more complete list is attached.

CJI&I actively promotes participation from individual Bar members by offering a variety of volunteer opportunities based on interest and the amount of time one feels comfortable donating.

STATE BAR OF MICHIGAN
JUSTICE INITIATIVES COMMUNITY
2007-08

COMMITTEE ON JUSTICE INITIATIVES (CJI)



**JUSTICE INITIATIVES COMMUNITY
PARTNERSHIPS**

The Justice Initiatives Community (CJI&I) encourages partnerships with other organizations. By collaborating on resources such as personnel, knowledge, and marketing, the quality of various projects, programs and trainings is enhanced. Since its inception, CJI&I has worked with numerous entities. The following is a partial list of those partners. It does not include the names of individual judges, lawyers, or law firms.

GENERAL

American Bar Association
 American Civil Liberties Union of Michigan (ACLU)
 ARC of Michigan
 Campaign for Justice
 Center for Independent Living, Detroit
 Cooley Innocence Project, The
 Deaf C.A.N.!
 Global Bridgebuilders
 Jury Curriculum Training High Schools participants
 Legal Aid and Defender Association (LADA)
 Michigan Association of Circuit Court Administrators
 Michigan Association of Counties
 Michigan Center for Civic Education
 Michigan Coalition Against Domestic & Sexual Violence (MCADSV)
 Michigan Court Administrative Association
 Michigan Commission on Disability Concerns
 Michigan Litigation Assistance Partnership Program (MI LAPP)
 Michigan Network for Youth and Families (MNYF)
 Michigan Poverty Law Program (MPLP)
 Michigan Probate and Juvenile Registers Association
 Michigan Protection and Advocacy (MPAS)
 Michigan State Bar Foundation (MSBF)
 Michigan State Police Forensic Science Division
 Michigan Supreme Court
 Michigan Trial Lawyers Association
 National Alliance on Mental Illness (NAMI) of Michigan
 National Bar Association
 Origami Brain Injury Center
 Prosecuting Attorneys Association of Michigan (PAAM)
 South-East Michigan Court Administration Association
 State Appellate Defender Office (SADO)
 State Court Administrative Office (SCAO)
 Wayne County Prosecutors Office

LAW SCHOOLS

Michigan State University Law School
 Thomas M. Cooley Law School
 University of Detroit Mercy Law School
 University of Michigan Law School
 Wayne State University Law School

SBM DIVISIONS/DEPARTMENTS

Communications Division
 Governmental Relations Department
 Research & Development Department
 External Development Department

SBM COMMITTEES/SECTIONS/AFFINITY BARS

Association of Black Judges of Michigan
 Criminal Defense Attorneys of Michigan (CDAM)
 Criminal Jurisprudence & Practice Committee
 Detroit Metropolitan Bar Association (DMBA)
 Ingham County Bar Association
 Michigan District Judges Association
 Michigan Judges Association
 Michigan Probate Judges Association
 SBM ADR Section
 SBM Children's Law Section
 SBM Committee on Domestic Violence
 SBM Criminal Law Section
 SBM Indian Law Section
 SBM Public Outreach Committee
 Women Lawyers Association of Michigan (WLAM)
 Wolverine Bar Association

LEGAL SERVICE PROVIDERS

Bay Area Women's Center
 Center for Civil Justice
 Community Legal Resources
 Counsel and Advocacy Law Line
 Detroit Metropolitan Bar Association Foundation
 Access to Justice Programs
 Elder Law of Michigan
 Farmworker Legal Services
 First Step Legal Advocacy Project
 Freedom House
 Guild/Sugar Law Center
 HAVEN
 Immigration Assistance Project Diocese of Kalamazoo
 International Institute of Metropolitan Detroit, Inc.
 Lakeshore Legal Aid
 Legal Aid & Defender Association
 Legal Aid of Western Michigan
 Legal Assistance Center of Kent County
 Legal Assistance Program of Macomb County
 Legal Services of Eastern Michigan
 Legal Services of Northern Michigan
 Legal Services of South Central Michigan
 Michigan Indian Legal Services
 Michigan Legal Services
 Michigan Migrant Legal Assistance Project
 Michigan Poverty Law Program
 Michigan Protection & Advocacy Services, Inc.
 Neighborhood Legal Services Michigan
 Prison Legal Services of Michigan
 Sixty Plus, Inc Elder Law Clinic
 Student Advocacy Center of Michigan
 The Salvation Army William Booth Legal Aid Clinic
 Underground Railroad
 Women's Justice Center

Make a Connection

Your Volunteer Contact Information

Name: _____

Company/Firm: _____

Address: _____

Phone Number: _____

E-mail: _____

Return completed form to:

Justice Initiatives Division
State Bar of Michigan
306 Townsend Street
Lansing, MI 48933

For more information, please contact:

Greg Conyers
Acting Director, Justice Initiatives
(517) 346-6358
gconyers@mail.michbar.org

Katy Conklin
Program Manager, Justice Initiatives
(517) 346-6307
kconklin@mail.michbar.org

Visit <http://www.michbar.org/programs/justiceinitiatives.cfm>

HELP
assure a
JUSTICE
system
that is
STRONG,
EQUAL,
and
FAIR
in its
application.

SBM
STATE BAR OF MICHIGAN

JUSTICE INITIATIVES

At a Glance

Committee on Justice Initiatives (CJI)

Remember what inspired you to become a lawyer? Want to feel that passion again?

Use your legal knowledge and experience to advance justice efforts. By volunteering for one of the State Bar of Michigan's four justice initiatives you will work with 100 other committed lawyers to move Michigan's justice system closer to the ideal of justice for all. In 2008-2009, the CJI initiatives are:

- Criminal Issues, that focuses on both the delivery of criminal legal services and the after-effects of criminal convictions
- Equal Access, which directs its work toward underrepresented groups of both lawyers and consumers of legal services
- Justice Policy, that examines, develops recommendations and positions about legislative issues
- Pro Bono, which aims to recruit, train and recognize pro bono lawyers and legal workers

Get Involved

Problem-solve to remove systemic barriers for the poor and disabled. Help ensure that the criminal justice system protects the innocent. Find ways for those accused and convicted of crimes to chart a course back to a productive life. Brainstorm how to make the pro bono contributions of our profession more coordinated and effective. Analyze proposed legislation and court rules for their impact on the disadvantaged.

It means something special to be a lawyer.
Join us now!

To Get Involved

I'm interested in the following issue/s (please check as many as you wish):

- Assigned Counsel Practices
- Cultural Awareness in the Courts
- Disabilities Issues
- Due Process in the Courts
- Juvenile Justice Issues
- Ongoing Civil Consequences of a Criminal Record
- Pro Bono Services
- Demographically Underrepresented Attorneys
- Veterans
- Other _____

I would consider donating my time toward a:

- Task Specific Commitment
- Project Specific Commitment
- Ongoing Commitment
- Other _____

(Continued on back)